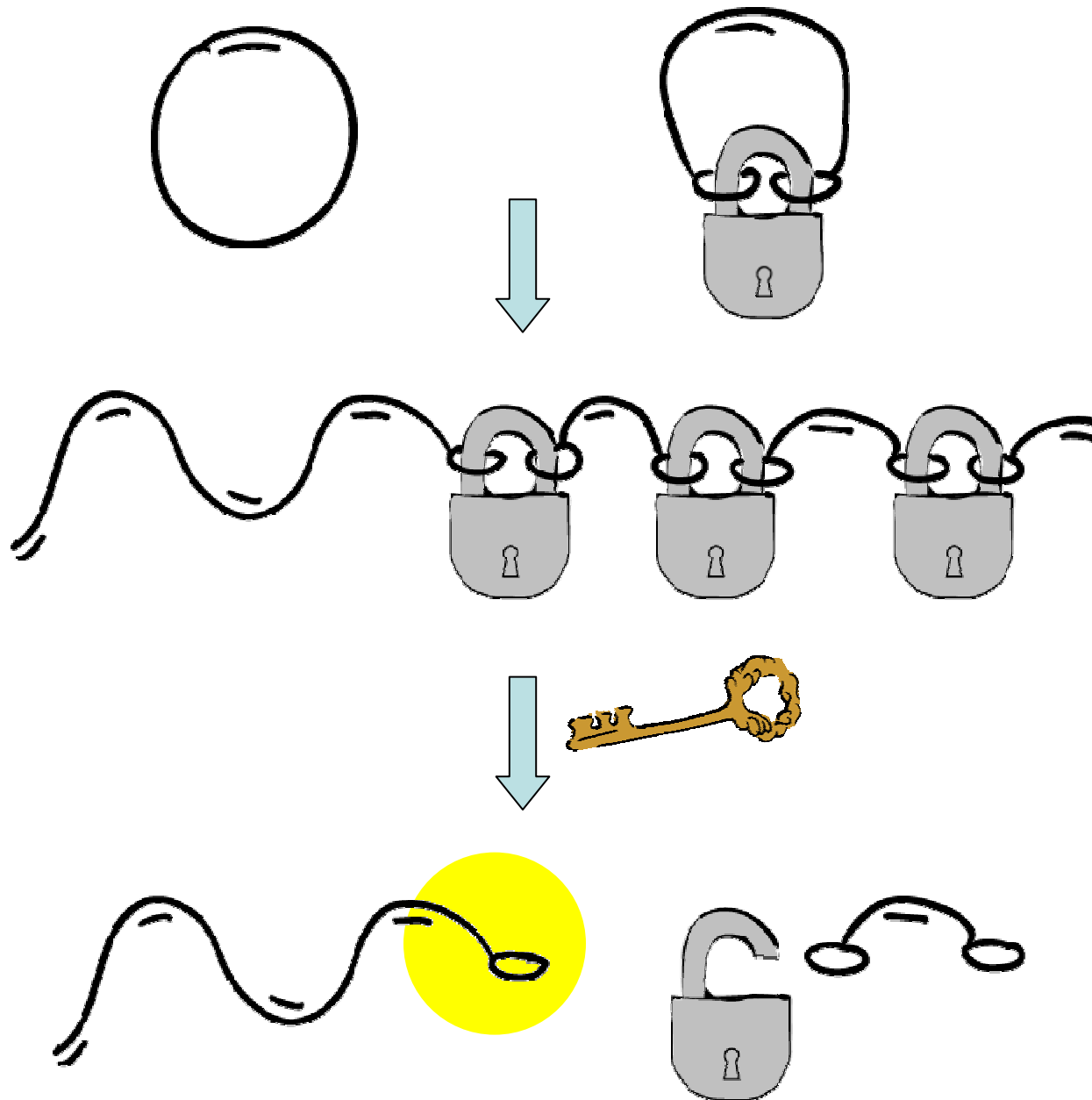
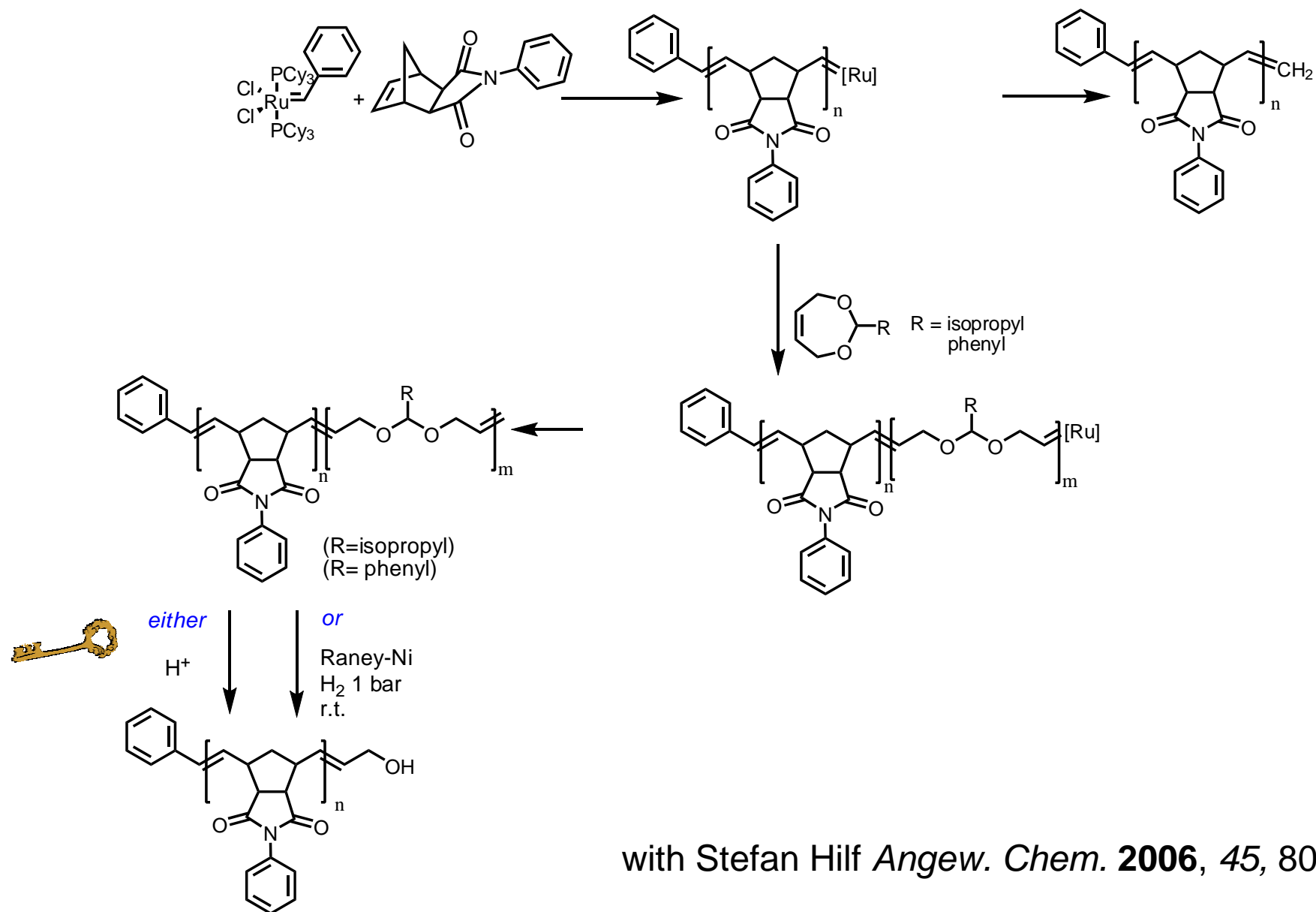


# Concept: sacrificial copolymer syntheses

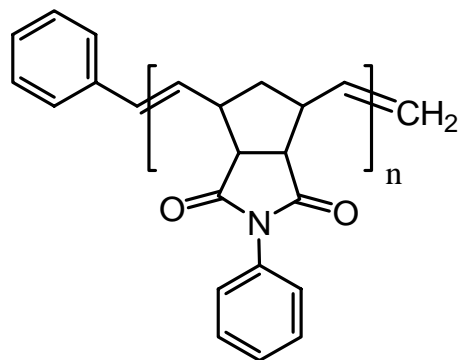


# Introducing alcohol end-groups

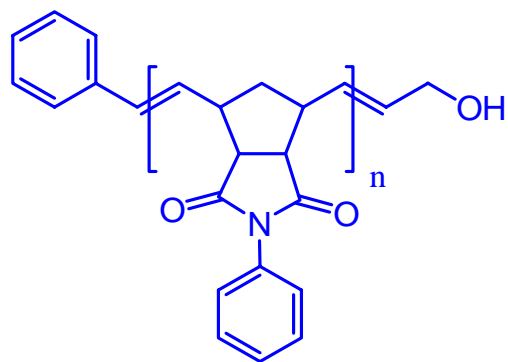
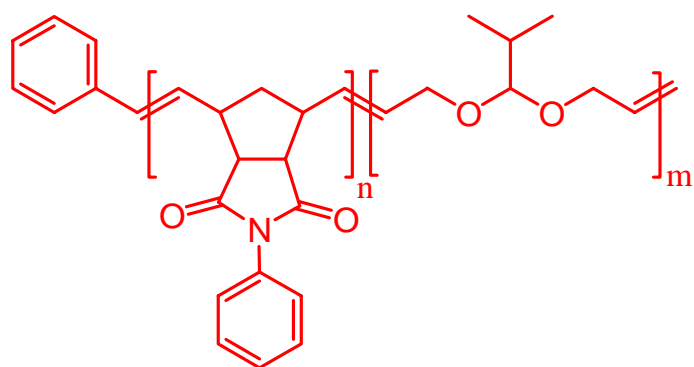


with Stefan Hilf *Angew. Chem.* **2006**, *45*, 8045

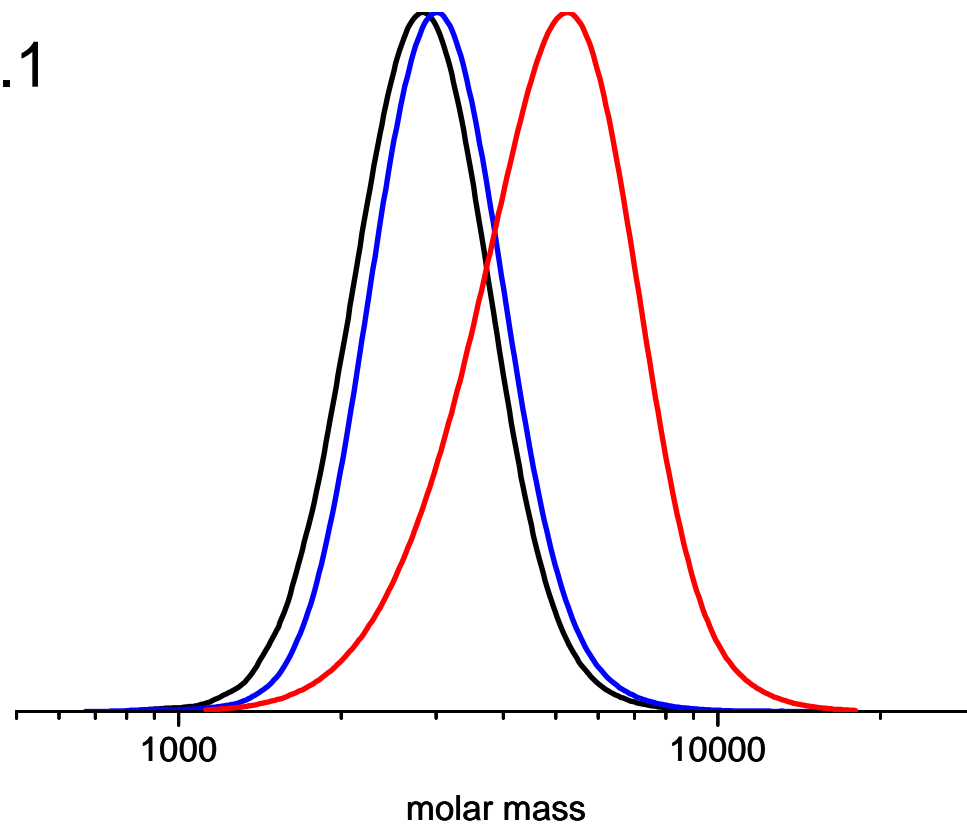
# GPC analysis



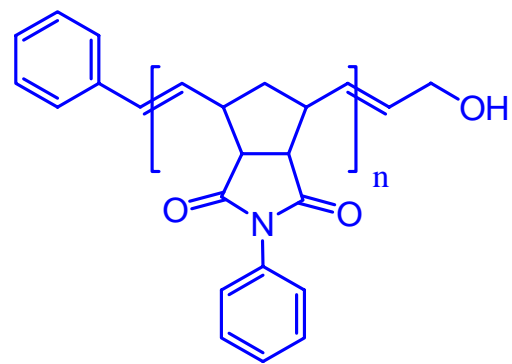
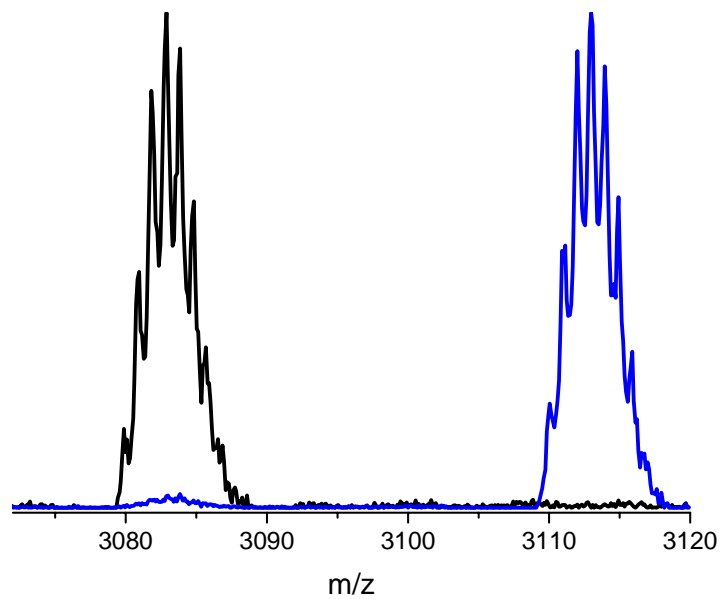
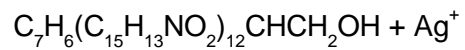
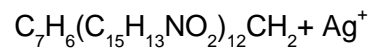
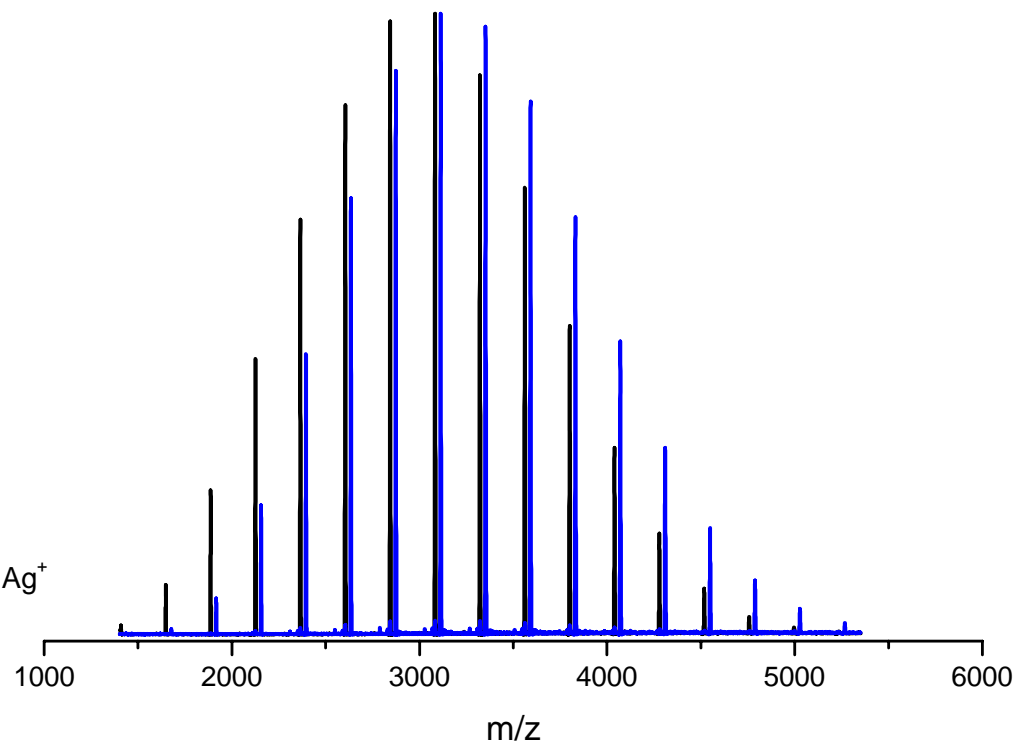
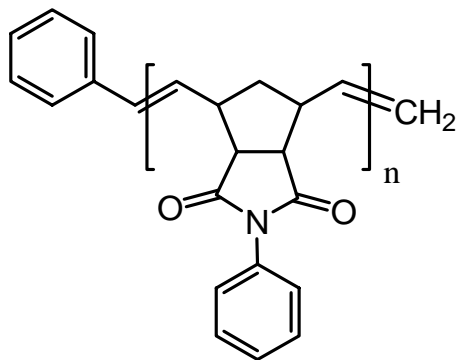
PDI = 1.1



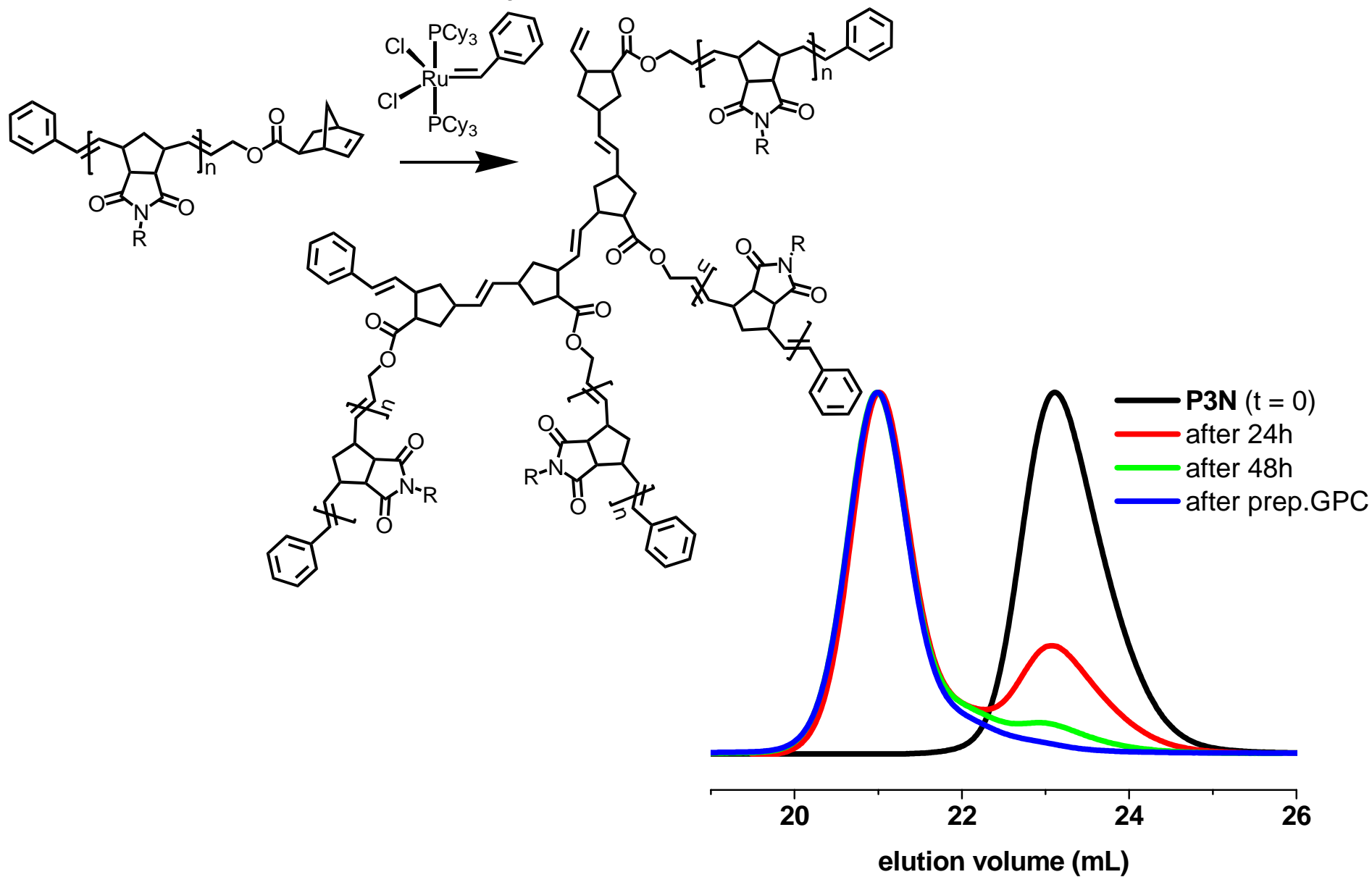
PDI = 1.1



# MALDI ToF

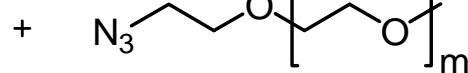
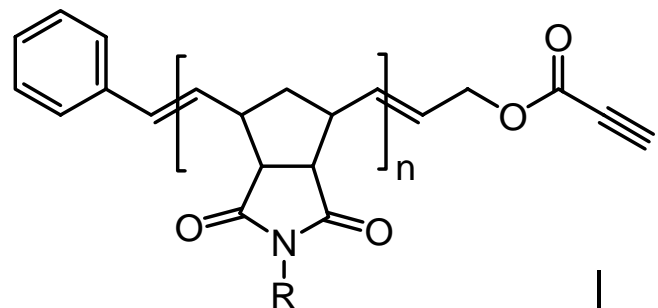


# Graft copolymers – all ROMP route



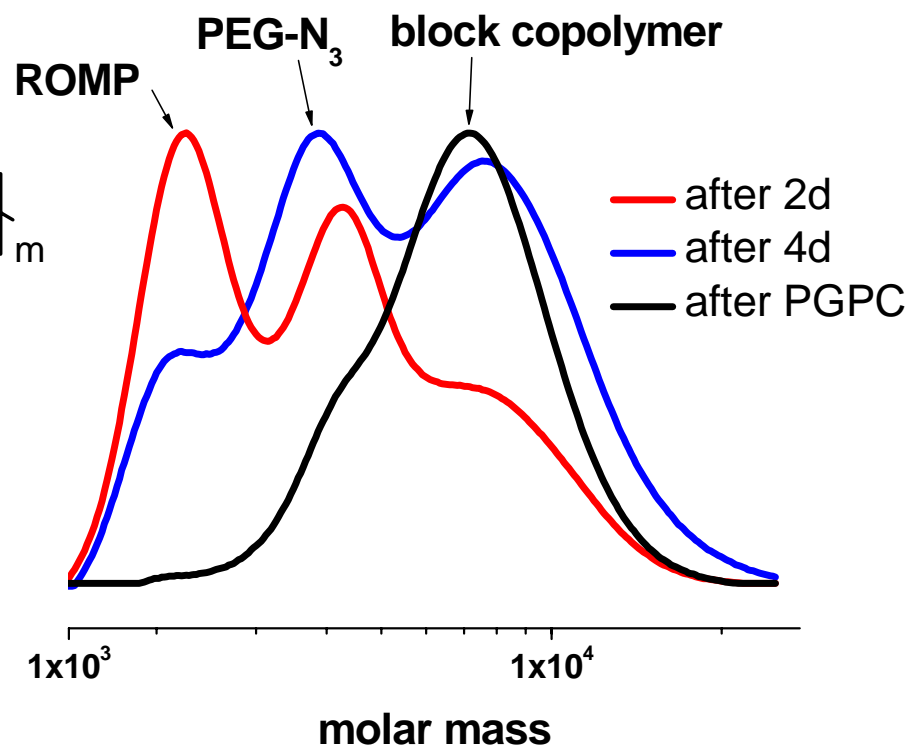
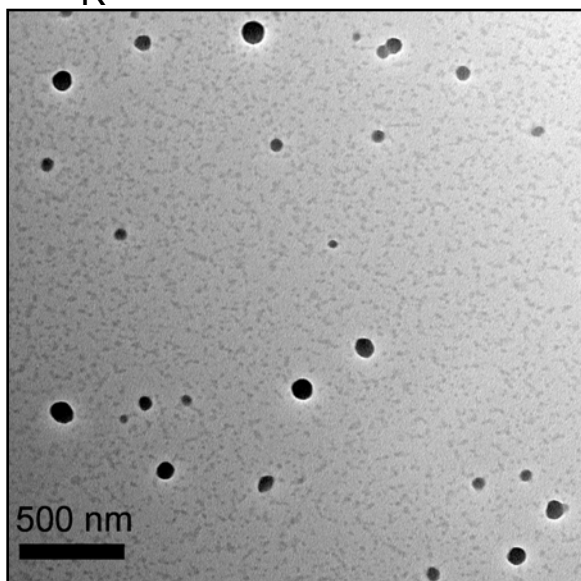
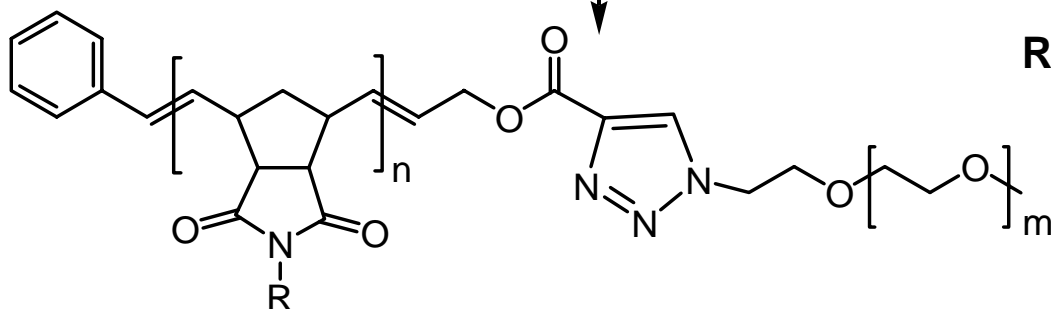
with Stefan Hilf *Macromol. Rapid Commun.* **2007**, 28, 1225

# ROMP-PEG block copolymers



R = Ph, hexyl

$(PPh_3)_3CuBr$   
DMF



with Stefan Hilf 2007 *submitted*